

Fashion Design

Studio

unit 1:

- Fashion Fundamentals
- Fashion Vocabulary
- Design Details
- Why we wear clothes
- Fashion Capitals of the World
- Most influential Fashion Designers

Name: _____

FASHION TERMINOLOGY

1. _____ – articles added to complete or enhance an outfit. Shoes, belts, handbags, jewelry, etc.
2. _____ – all men's, women's, and children's clothing
3. _____ - _____ – wild and daring designs that are unconventional and startling. Usually disappear after a few years.
4. _____ – item of clothing that satisfies a basic need and continues to be in fashion acceptance over an extended period of time. Timeless.
5. _____ - a garment that is a combination of tailored and draped.
6. _____ _____ – the various garment parts that distinguish styles. Necklines, collars, sleeves, bodice, lapels, hemlines, etc. (a T-shirt is a garment type, the neckline changes the style of that garment. i.e. crew neck, Henley, v-neck, etc.)
7. _____ – wrapped or hung on the body and usually held in place with pins, toggles, buttons, sash or belt.
8. _____ – a temporary, passing fashion. An item that has great appeal to many people for a short period of time.
9. _____ – the currently accepted style. A prevailing type of clothing that is favored by a large segment of the public.

FASHION TERMINOLOGY

FASHION TERMINOLOGY

10. _____ - a cycle of the rise, popularization, and decline of a particular style. Follows the sequence - introduction, rise, peak, decline, obsolete.

11. Fit - the right size or how tight or loose the clothing is on the person wearing it

12. _____ - a category of clothing. Dress, coat, suit, sweater, pants, etc.

13. _____ - (oat-koo-TOUR) the French term that literally means fine sewing. The finest clothing from fashion houses by major designers.

14. _____ to _____ - clothing mass produced in standard sizes and sold to customers without custom alterations.

15. _____ - the shape of a clothing style shown by its outer lines

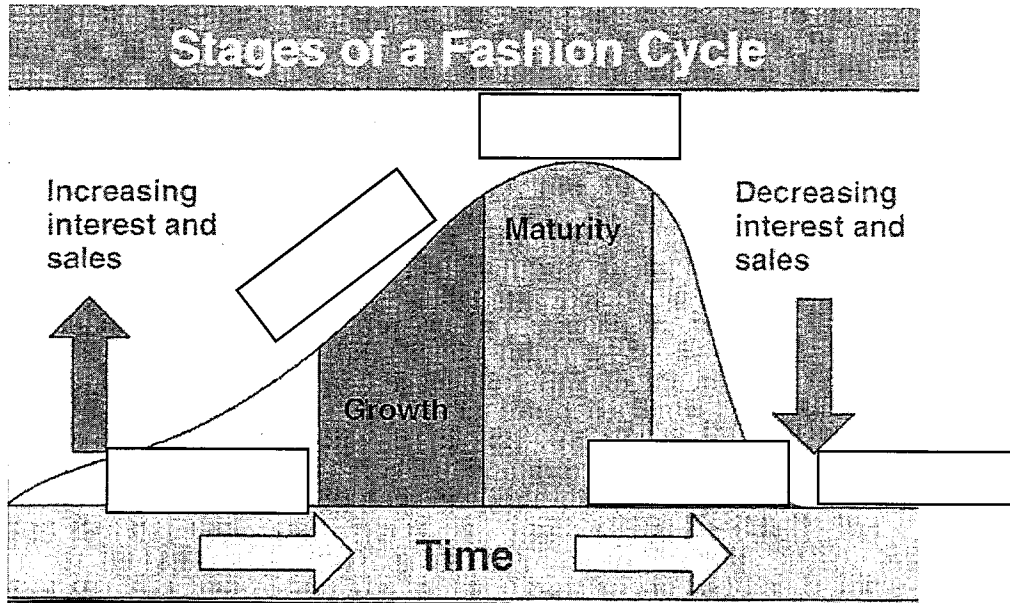
16. _____ - a particular shape or type of apparel item. The style of a garment is determined by the distinct features that create its overall appearance. Specific design details create specific styles (i.e. a sheath, shift and princess are all different styles of dresses)

17. _____ - a garment made by cutting fabric pieces and then sewing them together to fit the body.

18. _____ - the movement of fashion into the through the market place. (Change in hemlines, waistlines, color, shoe style)

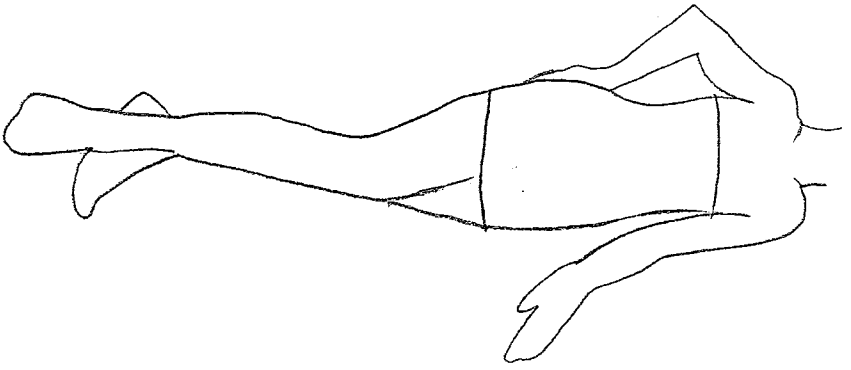
19. _____ - all the apparel a person owns including all garments and accessories.

Label the Stages of Fashion

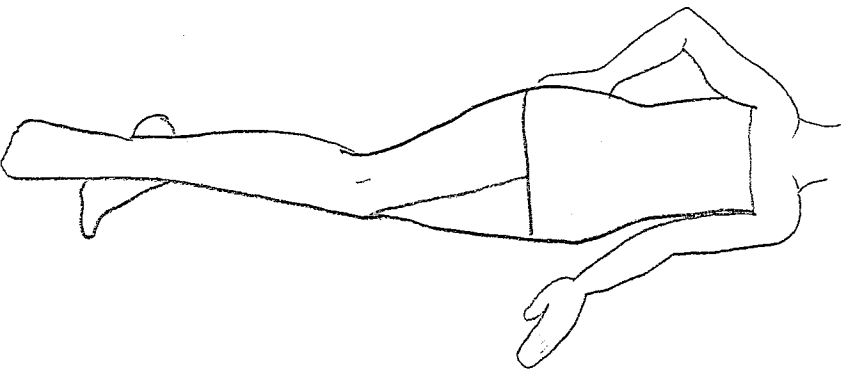


Design Details Paper Dolls

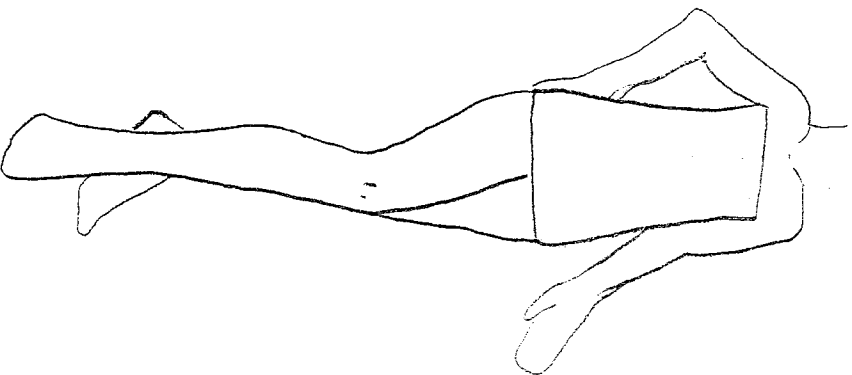
- Cut out a couple cardboard figure forms as your resource.
- You are to create at least **3** paper doll outfits incorporating **3** of the design details we just discussed in class. You may use your notes and the Fashion Details Book teacher has provided.
- You must add color to your final design.



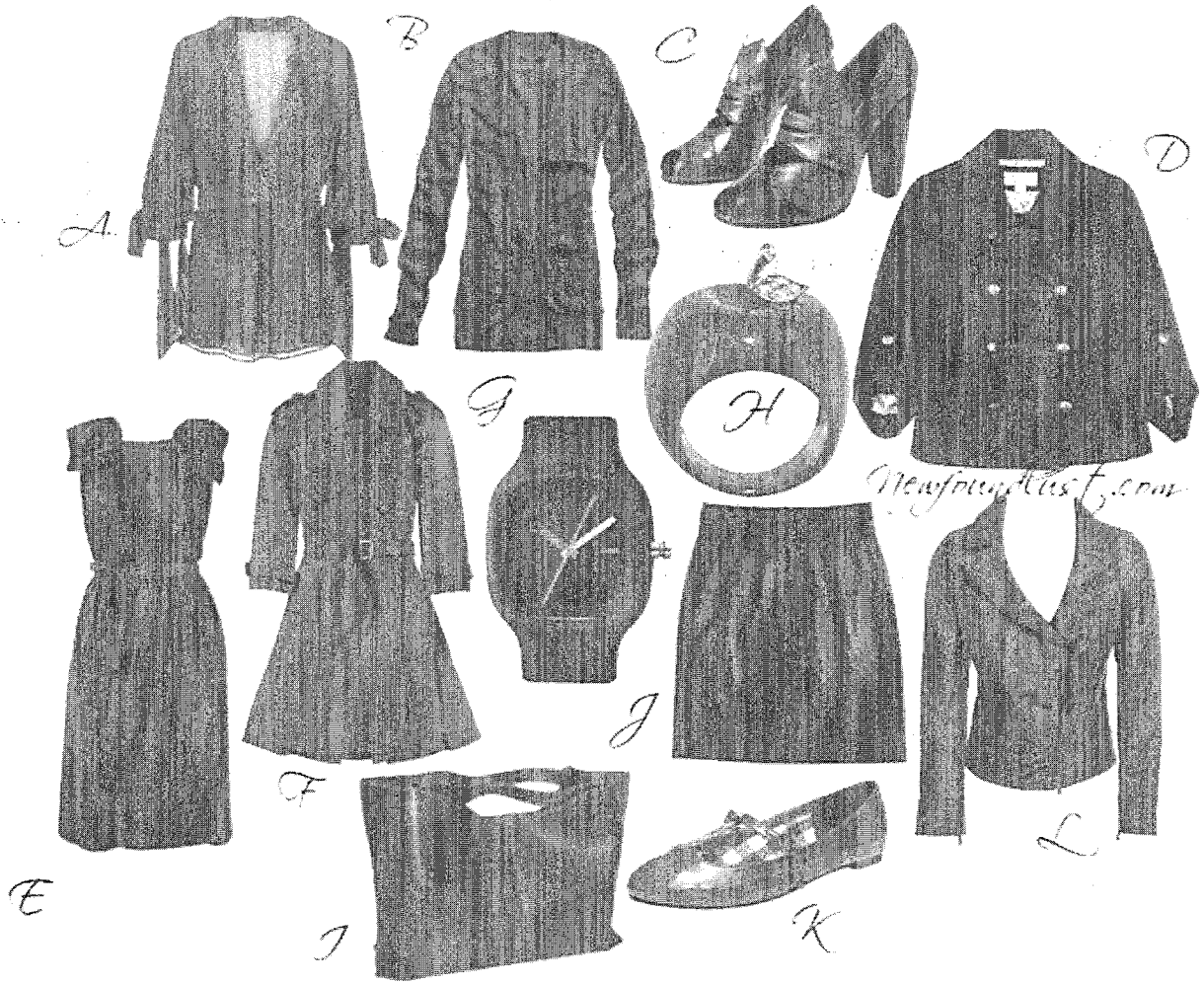
Design Details Incorporated:



Design Details Incorporated:



Design Details Incorporated:

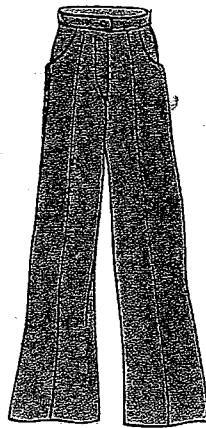


Design Detail Study Guide Assignment

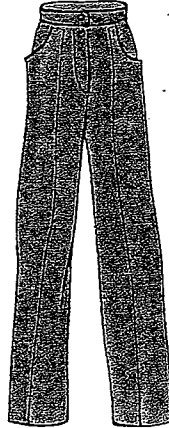
Design Detail Study Guide Assignment

KEEP THIS TO HELP YOU STUDY FOR THE STATE EXAM!!

Pants Styles



Flared

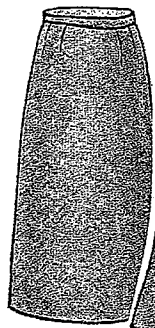


Straight

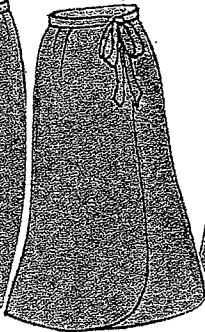


Tapered

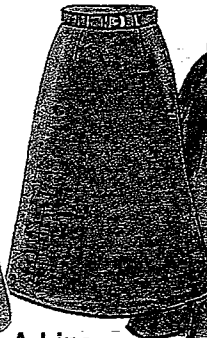
Skirt Styles



Straight



Wrap



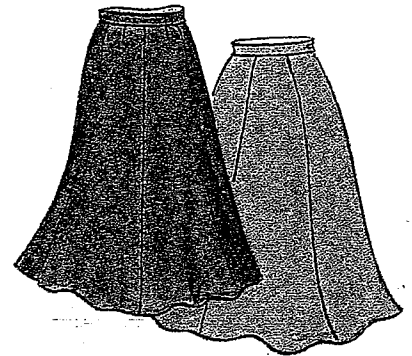
A-Line



Gathered



Yoke



gored

Shirt Styles



Dress



Henley



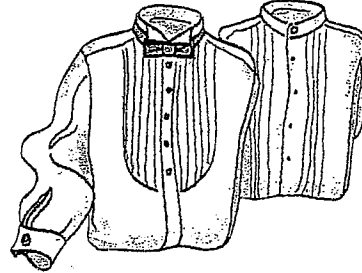
Polo



T-shirt



Fitted

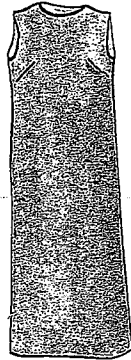


Tuxedo

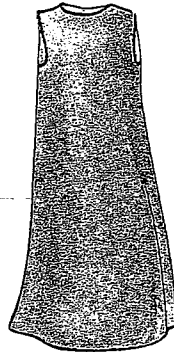
Dress Styles



Sheath



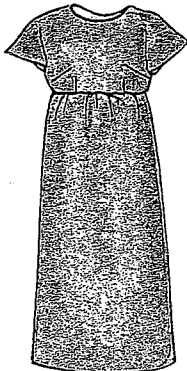
Shift or
Chemise



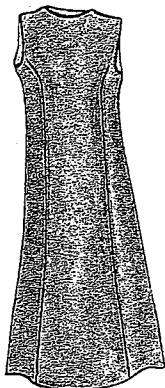
A-Line



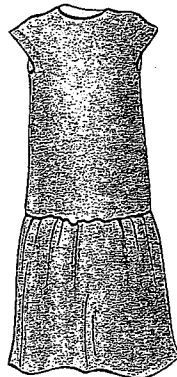
Shirtwaist



Empire

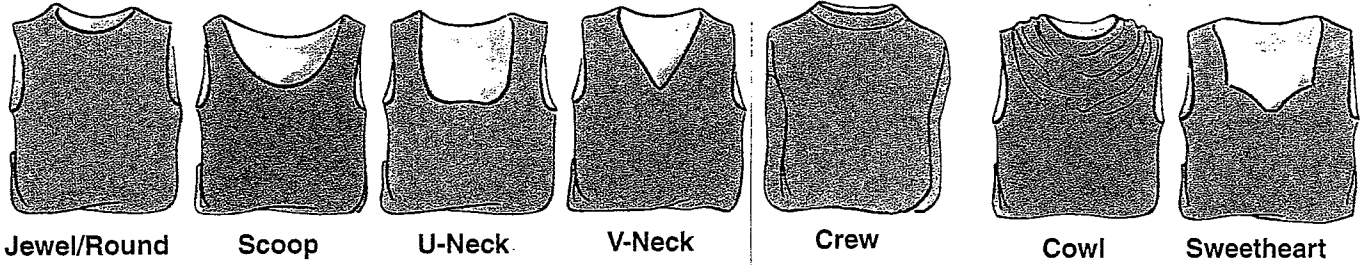


Princess

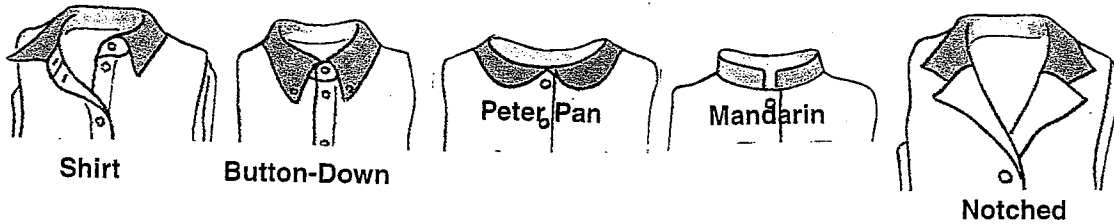


Dropped Waist

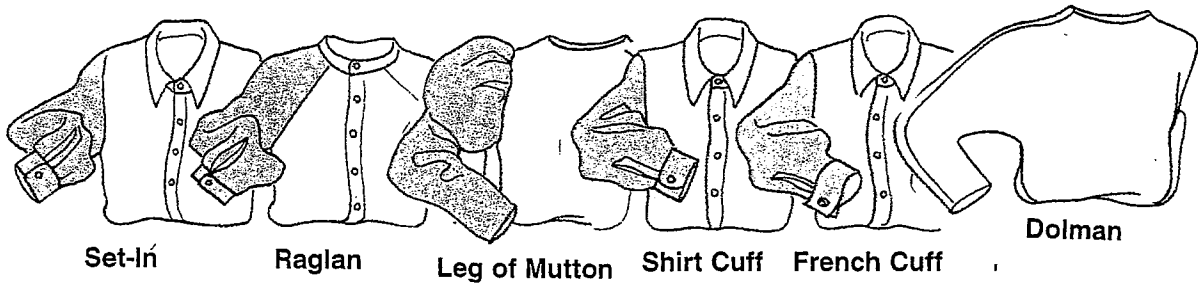
Neckline Styles



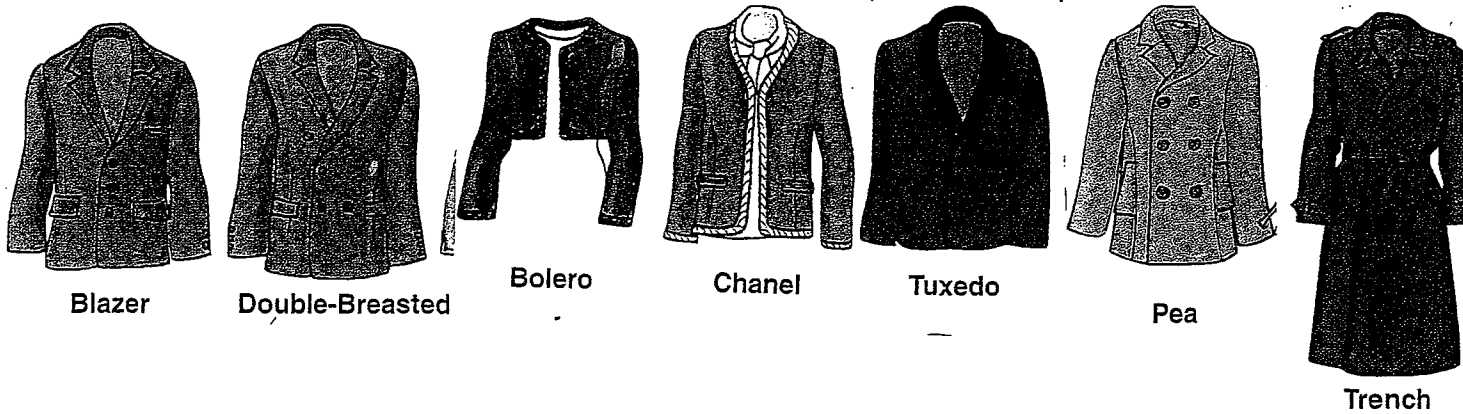
Collar Styles



Sleeve Styles



Jacket and Coat Styles



Why We Wear Clothes

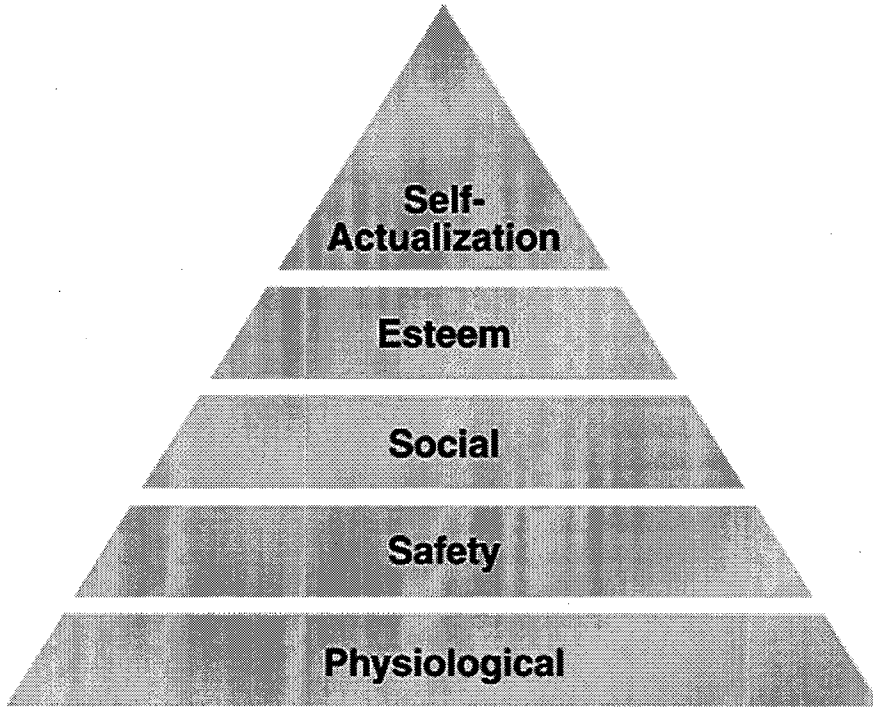
Bingo

Under the reason why we wear clothes write the definition. In the 3 boxes below that draw/write an example.

Protection	Identification	Modesty	Adornment	Status

Need for Clothing
or the
“Why” we wear a certain article of clothing.

Define each of the Hierarchy of Needs:



Protection

Rain Coat

Sunglasses

Safety Goggles

Bulletproof Vest

Camouflage

Safety Gloves

Spacesuit

Hazmat Suit

Hard Hat

Snow boots

Ski Gloves

Identification

School Colors

Cheerleader Uniform

Bridesmaid

Wedding Dress

Military Uniform

Religious Clothing

Work Uniform

Shirt work logo and nametag

HHS Tiger shirt

Cap Gown

Modesty

One piece swimsuit

Burqa

Tank top under clothes

Leggings under clothes

Status

Designer Jeans

Designer Sunglasses

Fur Coat

Jordan Shoes

Rolex Watch

Diamond Necklace

Adornment-

Favorite Colors

Make-up

New Belt

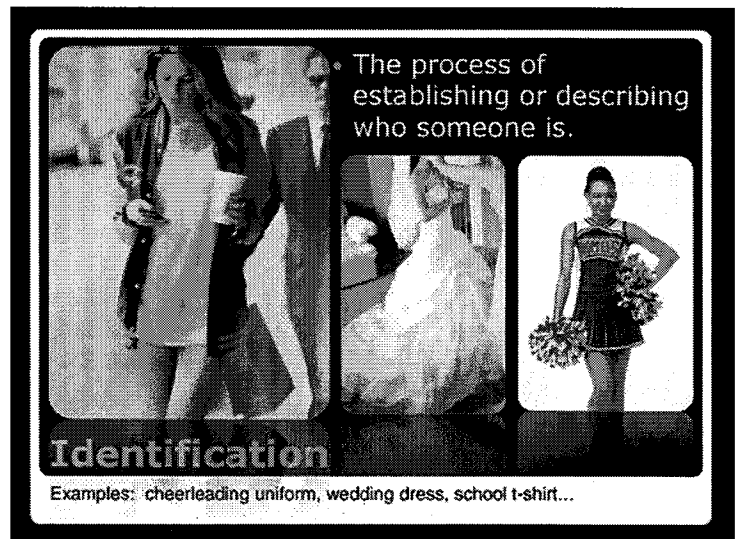
Tattoos

Scarf

Nail polish

Create a Google Slide Presentation

- Create one slide for every reason that we wear clothes and find 3 images per slide to illustrate that reason.
- Your name should be slide 1
- Then each why of clothing should be a slide
- For a total of 6 Slides.

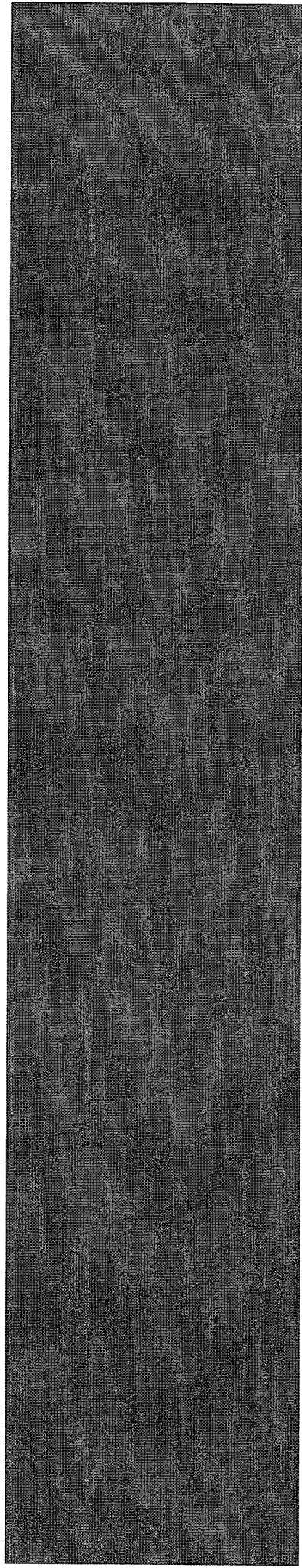


The process of establishing or describing who someone is.

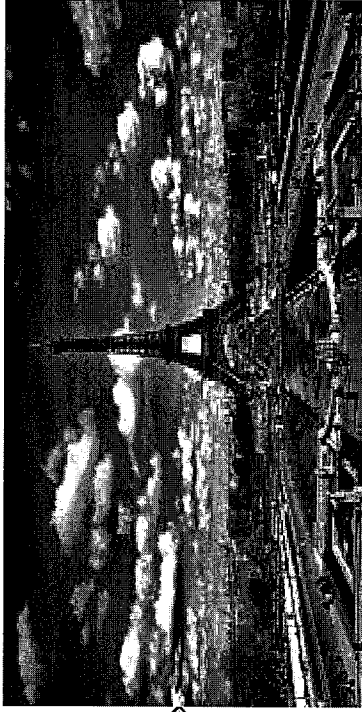
Identification

Examples: cheerleading uniform, wedding dress, school t-shirt...

FASHION CAPITALS
of the
WORLD



PARIS, FRANCE



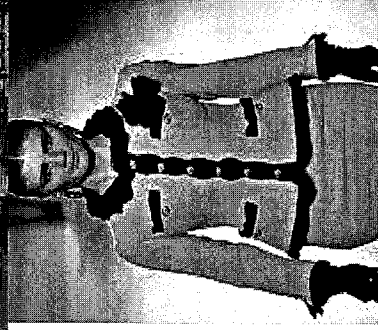
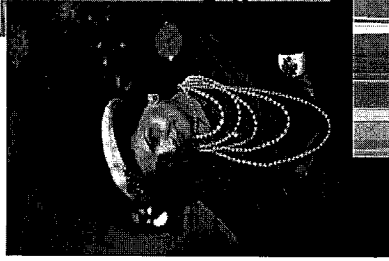
1st Fashion Capital

Known for fashion that is:

- C
- S
- S
- T C
- S A

Fashion Designers from Paris

- Coco Chanel
- Christian Dior

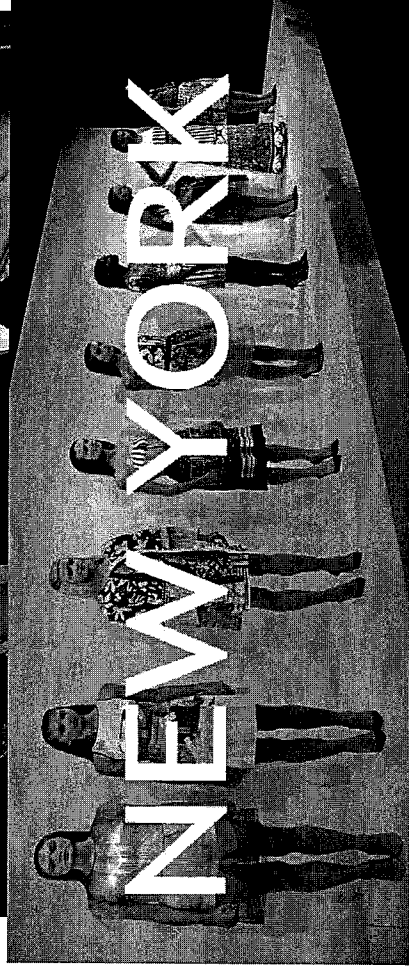
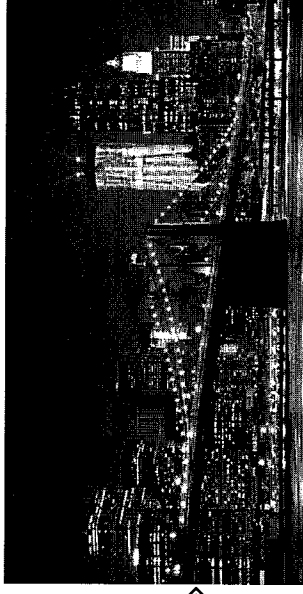


PARIS COLLAGE

New York, NY USA

- **Known for:**

- **Clean cut**
- **C S**
- **S**
- **Sportswear**
- **Natural fibers**



NEW YORK COLLAGE

Tokyo, Japan

Known for:

- A
- loose
- U
- Young Japanese favor

H _____ look inspired
by anime.



TOKYO COLLAGE

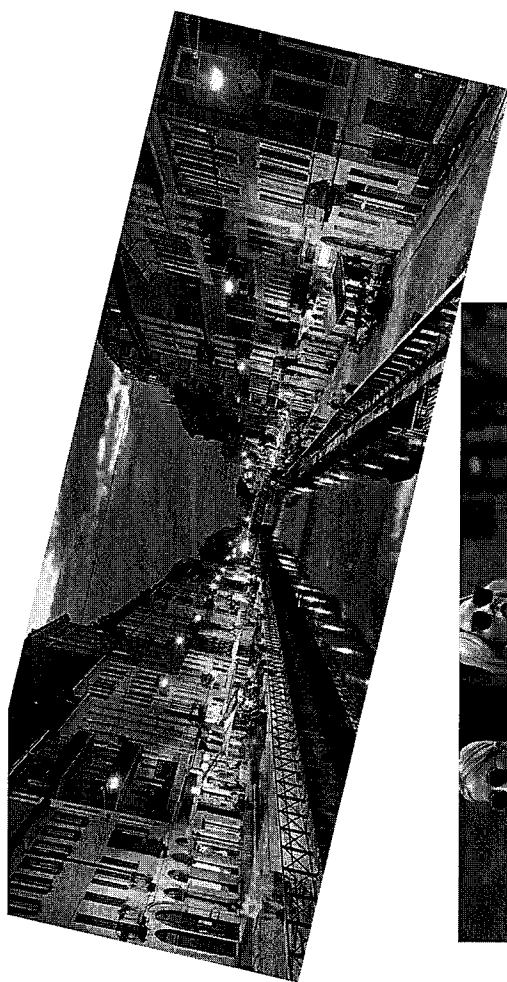
London, England UK

Known for 2 very different looks

- a "rebel" street look & the home of the _____ movement
- The young embrace an individualistic style and this is the real impact in modern fashion.
- ALSO known for _____ and of _____
- the upper class



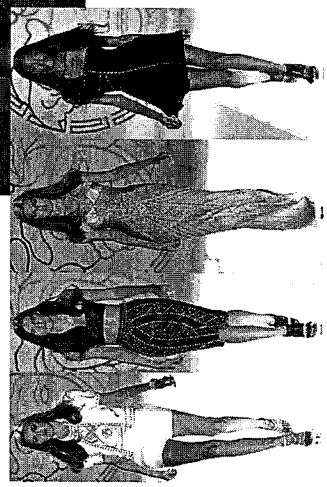
LONDON COLLAGE



Milan, Italy

• Known for:

- **C**
- **L**
- **E**
- **fabrics**
- **such as Merino wool.**



MILAN COLLAGE

Name _____

FASHION DESIGN STUDIO

UNIT 1 PORTFOLIO SCORE SHEET

Assignment	Your score	Points Possible
Fashion Terms		24
Design Details Paper Dolls		90
Needs of Clothes		30

Required Words And 2 pictures of each word	Your score	Points Possible
Paris		10
Chic		10
Stylish		10
Sophisticated		10
Smart accessories		10
Tailored cut		10
Total		/60

Required Words And 2 pictures of each word	Your score	Points Possible
London		10
Conservative Cuts		10
Traditional Styles		10
Rebel Punk look		10
Total		/40

Required Words And 2 pictures of each word	Your score	Points Possible
New York		10
Clean Cut		10
Casual Style		10
Natural Fibers		10
Sportswear		10
Separates		10
Total		/60

Required Words And 2 pictures of each word	Your score	Points Possible
Milan		10
Casual Elegance		10
Luxurious Fabrics		10
Merino Wool		10
Total		/40

Required Words And 2 pictures of each word	Your score	Points Possible
Tokyo		10
Asian Influence		10
Loose/Unstructured		10
Harajuku		10
Total		/40